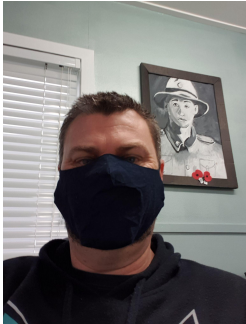




NEWSLETTER/PANUI

February 24th, 2022 ISSUE #3



A MESSAGE FROM MR EVANS - TUMUAKI / PRINCIPAL

Tena koutou katoa o Te Atatu Intermediate whānau.

I said it last week, and I'll say it again, what a difference a week makes!

We are continuing to receive notifications of positive cases within the TAI community.

We are navigating the quickly changing landscape as best we can, and as we anticipate that we are about to move into phase 3 of the red setting we appreciate your continued support!

TAI Covid response

There are **3 key measures** that minimise the risk of students within the classroom being exposed to the virus, which we are adhering to. In the information that we received this week from the MoE point number 3 is no longer required to 'reset the classroom'. We will however continue to follow this, as getting students outside regularly into the fresh air is best for all;

- 1) **Adequate ventilation** - all doors and windows of classes are open for the entirety of the day to allow airflow through the classes.
- 2) **Mask wearing** at all times inside - students wearing masks whilst inside reduces risk of exposure. Students are able to take mask breaks outside and teachers factor this in and try to get students outside where possible.
- 3) **Classroom breaks** - Less than two hours of continuous time within the classroom space. Our timetable means that there is only a maximum of 1 and a 1/2 hours in class. Each break, all classes are outside for more than 15 minutes with the classroom fully open.

Under phase 3 of the red light setting (which we anticipate we will be at shortly), schools no longer conduct contact tracing. This means that when we identify that there is a positive case at school - we no longer notify contacts.

The latest health guidelines from the MOE for phase 3 state that household members of positive cases MUST isolate. Therefore, if anyone in your household tests positive for COVID, you all must isolate.

It remains important that you notify us if your child tests positive for COVID-19

Should your child become positive for Covid, please email lloyd.e@teatatu.school.nz with the following information;

- Name of your centre/school/kura -

NEWSLETTER / PANUI continued

- Name of the positive case -
- Date of Birth of the positive case -
- Date last attended the centre/school/kura - Infectious period /dates if known -
- Date of test -

Please monitor your child's health and keep them home from school if they are unwell.

Teachers have set tasks and work on Google Classroom should your child need to isolate. We also have hard copy packs that we can delivered to local addresses - contact Deputy Principal Kelly Clarke on kelly.c@teatatu.school.nz

Thank you all for your understanding during this time.

Non Covid related news!

School Lockdown Drill

A **school lockdown** is for an external event that would cause students to go into the classroom for an extended period of time until the external event was completed. The senior leadership team and office staff completed a 'desktop' exercise with outside facilitators Harrison Tew on Monday.

An external event could be something as simple as a swarm of bees that have mobbed across the school, or a local fire that has sent smoke /fumes across the school- through to more serious incidents of an offender on site or in the vicinity.

Information about lockdown procedures was shared with staff at a staff meeting and shared with students. This included what to do in the event of a fire - where they need to get **out** of the building, through to Lockdown, where they need to get **into** the building. The double turfed courts is our meeting place post any lockdown event to debrief and check all students are present and we will be practicing this with the students at some stage in the near future.

In the event of a school lockdown, the following would occur;

- TAI would be notified of an event that required lockdown.
- A continuous bell would ring designating TAI is in a lockdown situation. Students and staff would 'lockdown' the class.
- All doors, windows would be locked, including external corridors etc, lights off, Students and staff would need to lie down on the floor and remain quiet. Should the incident be bees, as an example, students would not need to lie on the ground and would continue their work.
- Senior leadership staff would be liaising with police if required, there would also be communication to parents letting you know TAI is in lockdown. All further information updates would be via our website.
- Once the danger was over, parents would be notified that we have received the all clear.

It is vital that the school has the most up to date contact information for all students. Please contact office@teatatu.school.nz if you wish to update details.

NEWSLETTER / PANUI continued

Mufti Day for Tonga - Thursday 3 March

In response to the eruption in Tonga recently, Te Atatu Intermediate will be holding a mufti day to support a school and their families in Tonga next Thursday. FWPS Akoteu of Sia'atoutai is a church school with about 80 students. TAI will be sending books to the school and we are asking our students to bring a can of food or pack of rice/noodles and a gold coin donation if they are able to support this fundraiser. Thank you. Please contact Angela Collins angela.c@teatatu.school.nz for any further details.

Counselling at TAI

My name is Robyn Ramsay and I am the school counsellor at Te Atatu Intermediate School. I am at the school each Friday and would be happy to have a confidential chat with any student who may be struggling or experiencing any kind of challenge in their lives.

If you sense your child might be feeling sad, anxious, depressed, confused, teary or just not feeling themselves or if they are having trouble with friends, decision making or generally finding life hard at the moment, then I am available to meet up with them during the school day.

If this is the case, please do not hesitate to contact Mrs Collins at angela.c@teatatu.school.nz to set up an appointment for your child.

Road Improvements information from AT

For your information, I have been notified of road improvements on Harbourview Rd, outside the school. They have assured me this will not impact on students crossing safely before/after school. Information from AT below;

'Please be advised we have upcoming works on Harbour view road from the 7th March 2022 to 10th April 2022.

Hours of work:

***From 7am to 7pm (Monday to Saturday) – Enabling Works – 7th March to 24th March
24 hour full road closure – Pavement Works - 2 weekends - 25th March to 10th April'***

A small number of hard copy newsletters are also sent to classes for those unable to access email.

Should you not be receiving these newsletters via email, it will mean that we don't have your correct details. Could you please let the office staff or your child's teacher know so that we can input the correct information in our system. (office@teatatu.school.nz)

Kia pai te wiki, Have a fantastic rest of the week! Stay safe everyone!

Nga mihi nui

Lloyd Evans

Principal/Tumuaki

17 February 2022

We need to do some road maintenance in your neighbourhood

Kia ora,

Harbour View Road (between Pringle Road and Te Atatu Road) – Road Rehabilitation

Aucklanders have told us that moving around our city safely and easily is important to them.

We have to cover a lot of ground – from looking after roads and footpaths, to cycling routes, parking, public transport and most importantly our people.

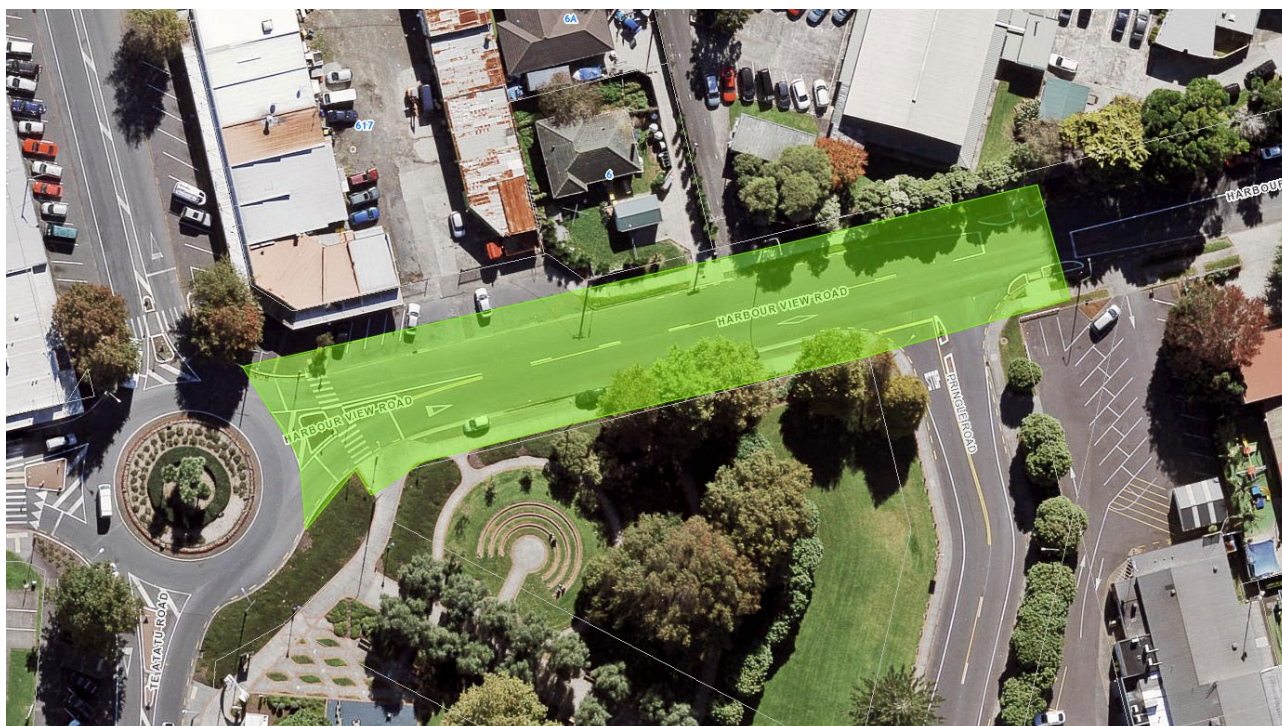
Where	Harbour View Road (between Te Atatu Road and Pringle Road)
When (start date)	7 th March 2022 to 10 th April 2022
Hours of work	From 7am to 7pm (Monday to Saturday) – Enabling Works – 7 th March to 24 th March 24 hour full road closure – Pavement Works - 2 weekends = 25 th March to 11 th April
For (duration)	2 weekends – road closure (Pavement Renewal) 3 Weeks – one way detour (Enabling Works)

The work we're doing

We're doing this work to maintain and improve your neighbourhood and to keep customers safe. The drawings show where we'll be working.

We'll do our best to start the work on time. Factors such as wet weather could mean a delayed start. If the delay is significant, we'll notify you.

We know our work can be a bit loud, and that noise – particularly at night – can be disrupting. We'll do our best to keep noise levels down.



We'll handle traffic flow in and out of the area, and any detours

We will need to close a road and set up detours. Please plan ahead and think about using another route. We'll set up signs that give traffic directions for surrounding roads. If you live somewhere along a closed road, traffic controllers at either end of the road will help you. Please follow all signs, light signals and traffic directions.

On-street parking will be limited while we carry out the work. You may need to either park on your property or on a side road and walk to your property.

Contact Us

Get in touch if you have any questions or concerns about this work.

To learn more about how we maintain roads go to our website: www.at.govt.nz/road-maintenance

Ngā mihi,

Sanjesh Prasad

027 236 9418, Sanjesh.Prasad@fultonghogan.com