



NEWSLETTER/PANUI

February 17th, 2022 ISSUE #2



A MESSAGE FROM MR EVANS - TUMUAKI / PRINCIPAL

Tena koutou katoa o Te Atatu Intermediate whānau.

Well, what a difference a week makes! Unfortunately, we have joined the countless other schools across the region who have experienced positive covid cases. To our whānau who have been affected either as a positive case, or a close contact, our thoughts for a speedy recovery are sent your way. A huge thank you to the parents of our affected classes for your support.

I will put below our process for confirmed cases of Covid at TAI.

TAI Covid process

We have had our processes ready for the eventuality of positive cases within school, however nothing prepares you more than having to work through the process for the first time. I would like to thank the parents/whānau of the affected classrooms this week. We have erred on the side of caution and our latest Ministry of Education meeting on Wednesday outlined further processes for cases in schools at phase 2 of the red light.

There are 3 core areas that minimise the risk of students within the classroom context becoming close contacts which we are adhering to. They are;

- 1) **Adequate ventilation** - all doors and windows of classes are open for the entirety of the day to allow airflow through the classes.
- 2) **Mask wearing** at all times inside - students wearing masks whilst inside reduces the exposure. Students are able to take mask breaks outside and teachers factor this in and try to get students outside where possible.
- 3) **Classroom breaks** - Less than two hours continuous within the classroom space. Our timetable means that there is only a maximum of 1 and a 1/2 hours in class. Each break, all classes are outside for more than 15 minutes with the classroom fully open. This allows a 'reset' for when they re enter.

Although it is not an exact science, it is the process that the Ministry has supplied us with and which we are using. Should there be cases, then we complete a spreadsheet with the above items entered that allow for us to identify close versus casual contacts. Unfortunately this can take a little time,

NEWSLETTER / PANUI continued

hence we erred on caution with our two classes this week. Again, thank you parents for your support around this.

Should there be a case identified within a classroom at Te Atatu Intermediate, we will;

- 1) Contact our Ministry Single Point of Contact representative (SPOC) to start the process
- 2) Send relative information about the case to the SPOC for identifying day 0 (the day they became contagious)
- 3) If during the school day, we will inform parents via email to let them know there is a case within the class and to come and collect their child. Isolation zone is the school hall - this would also be the collection point. Senior staff will be available to direct.
If outside of school hours, school will notify whānau via email.
- 4) School will then complete contact trace spreadsheet to identify **close versus casual** contact
- 5) School will then notify whānau of the class information whether the student is a **close or casual** contact. Close contacts isolate - casual contacts are able to return to school.
- 6) Rest of the school will also be notified that there is a confirmed case in the school community.
If you receive this email - and no other email correspondence, this means that your child is not in the class with the positive contact. Your child can continue at school as normal.
This is purely to let the school community know that we have a case and are working through the process. Please note, we also value the right to privacy for the affected contact and their privacy is paramount.

Close contact is someone who has had close contact with a person with Covid 19 when they were infectious. Close contacts must isolate and get tested on day 5 - and **complete 7 days of isolation** from day 0.

Casual contact is someone who has been in the same space **at the same time as someone infectious with Covid-19**. But you may not have been near the person, or factors reducing contact have been followed. Casual Contacts are at lower risk of getting sick with Covid-19. Casual contacts are no longer required to isolate, but should monitor for symptoms and get tested if they are feeling unwell.

We hope that this clarifies somewhat what happens when we receive the notification. If you have any questions, I am happy to answer them. Please contact me via lloyd.e@teatatu.school.nz

I have found this very handy guide that helps explain the process around what to do at phase 2.

Explaining COVID-19 contacts (Phase 2)

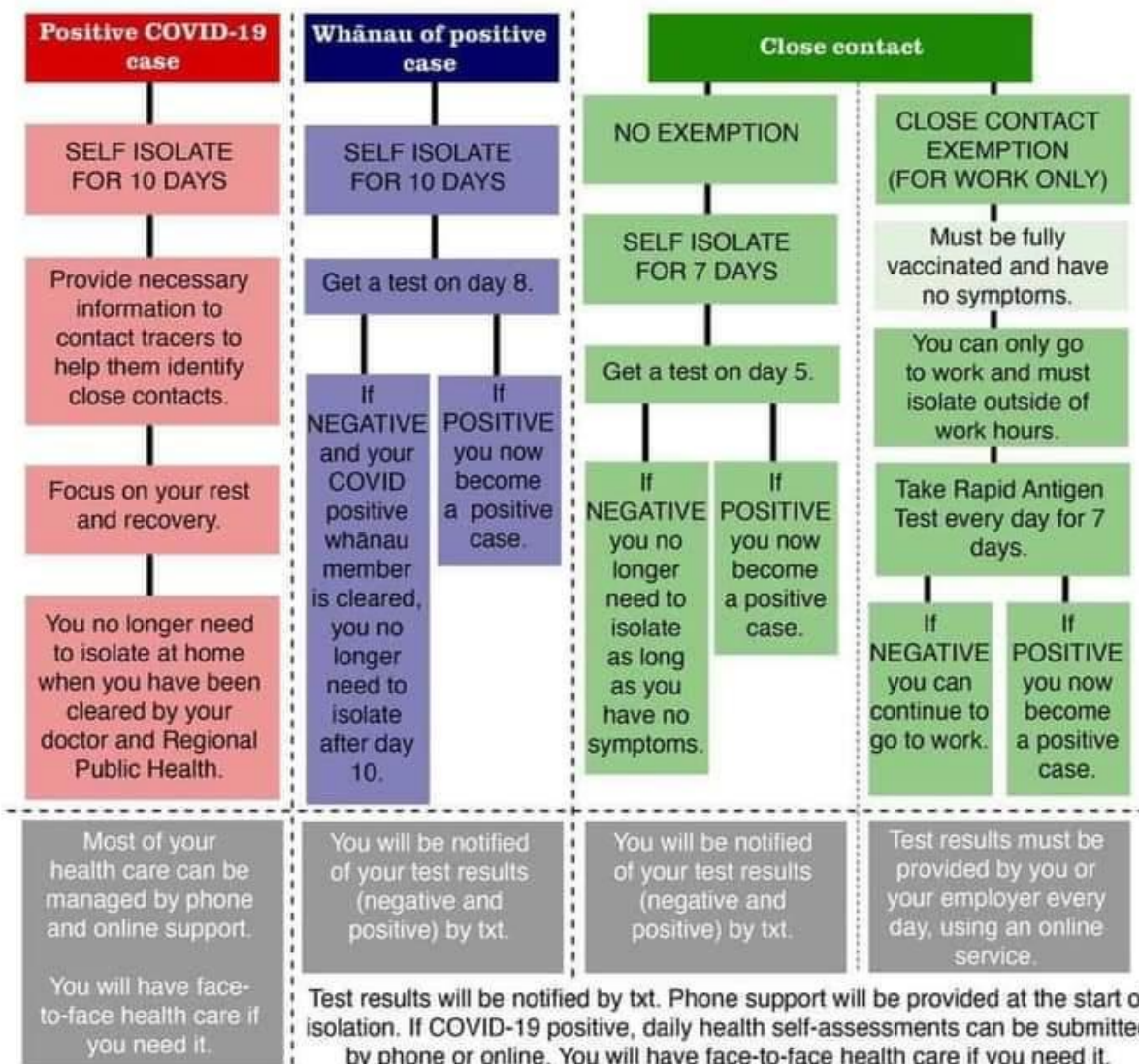
What is the difference between a positive case, whānau of a positive case and a close contact?

Positive case - someone who has tested positive for COVID-19.

Whānau of positive case - the people who live in the same house as someone who has tested positive.

Close contact - someone who has had contact with a person with COVID-19 when they were infectious.

Secondary and casual contacts are no longer impacted by COVID-19 restrictions but you should monitor for symptoms and get tested if you are feeling unwell.



NEWSLETTER / PANUI continued

Music - A reminder that tonight is the Music information evening via Google Meet.

MUSIC INTEREST MEETING! THURSDAY, 17TH FEB at 7PM

Video call link: <https://meet.google.com/zmd-jtie-aq>

Get all the info and assistance you need to decide which instrument is right for you. The Music team will be available to answer queries and help arrange hireage if needed.

Property

We are very excited that the playground has now been completely topped up with Cushionfall bark and was reopened today, just in time for Mini-school 2 to enjoy. Tomorrow it will be Mini-school 3s turn for their playground zone.

Addition to staff - In our last newsletter, **Mr Ian Felix** name was inadvertently left of the staff list. Mr Felix is our PE and Sports Teacher and he can be contacted on ian.f@teatatu.school.nz for any school sports questions. On that note, all zone sports days for term 1 have been postponed at the red light setting.

A small number of hard copy newsletters are also sent to classes for those unable to access email.

Should you not be receiving these newsletters, it will mean that we don't have your correct details. Could you please let the office staff or your child's teacher know so that we can input the correct information in our system.

Kia pai te wiki, Have a fantastic rest of the week! Stay safe everyone!

Nga mihi nui

Lloyd Evans

Principal/Tumuaki