

# TE ATATŪ INTERMEDIATE

## *Tū Tāngata*

*Equipping our students to stand tall: To be the best people they can be and, by becoming life-long learners, reaching their best potential.*



## MESSAGE FROM MR EVANS - TUMUAKI

### **Tēnā koutou katoa o Te Atatū Intermediate whānau.**

Welcome back to Term 3. We have another busy term ahead and some big events coming up also. Currently, all classes are experiencing the Hauraki Gulf via Virtual Reality headsets and we are fortunate to have Blake Trust in with us this week. Next week, we have our World of Maths hands on, problem solving, maths tasks that each class will have an opportunity to revolve through as well.

This Friday, we celebrate the Te Atatū cluster of schools Matariki festival with performances across the day from all Te Atatū schools at the Te Atatū Community Centre. Each school has scheduled times to perform and our TAI Pasifika group will be performing at 1.30pm, with our TAI Kapa Haka combining with Edmonton Primary to perform at 2pm. All are welcome and other schools will be performing from 10am onwards.

On Tuesday 15 August, we will have our annual Open Night from 6.30-8 pm for Year 6 students. Please, if you know any Year 6 students, could you please encourage whānau to enrol so we can start planning for 2024. Enrolment forms can be also be found online at our website [www.teatatu.school.nz](http://www.teatatu.school.nz)

This term, we also have our two sports camps held at Totara Springs and teams are working towards competing against other schools at this week-long tournament in multiple sports.

Finally, our term will end with our much-anticipated school production, which this year is Disney's The Lion King Junior. Rehearsals are full steam ahead at present.



# IMPORTANT NOTES I

## ENROLMENTS

2024 Enrolments are now accepted. We kindly request that all In-zone Enrolments be in ASAP to help assist with our predicted numbers for 2024. Out-of-zone enrolments close on Wednesday 30th August. Please complete the forms available on our [website](#).

## SANITARY PRODUCTS

Free sanitary products are available for any of our students who may require them. Orders can be placed through your KINDO account.

## RUTHERFORD COLLEGE EXPO

Next Wednesday, a group from Rutherford College will be visiting our Year 8 students in the hall. This will be a great opportunity for students to learn about some of the exciting opportunities and learning programmes that await our students at Rutherford College!

## WORLD OF MATHS DAY

Next week we have the World of Maths Roadshow visiting. Students will be engaged in hands-on activities that will cater for all ability levels and probe their problem-solving skills. It is a highly engaging session that will show the children that Maths can be fun! There is no cost for your child to attend. For more information, please [click here](#).



## STUDENT KAI DONATIONS

A big ngā mihi to Bigfoot Adventures & Presheen Sukdhoe for their generous donation of biscuits and snacks for our daily student lunches. TAI currently has 18 students we provide lunch for every day. This is a huge help!



## KINDO & EZLUNCH

Kindo & ezlunch are excited to share the arrival of a fresh new look in Term 3! With it's improved layout and enhanced features, the interface is now easier than ever to navigate, further simplifying school life and saving you time.

- So what can you expect from the new and improved versions of Kindo & ezlunch? A fresh, new look with better navigation and clear student selection
- Clearer cart layout showing what has been purchased for each person
- Faster and easier checkout flow for a better shopping experience
- Better visibility of which items are available and which aren't
- New item search & sort function e.g. sort lunch by dietary requirement
- Easier process for ordering lunches for 'multiple days'

## LION KING PRODUCTION

Our Lion King Jr production will be during Week 10, Monday 18th - 21st September. Keep an eye out for tickets (yet to be released) which will be available soon for purchase via KINDO.

## P.A.C.E TERM THREE

Our P.A.C.E is beginning next week Wednesday with another fantastic & diverse range of activities. TAI students can explore new areas of interest, develop new skills, and broaden their horizons. It is a life skill for students to meet other teachers and learn to adapt to different teaching styles and environments. Therefore, each syndicate will have a new set of activities. Some of the options available include:

- Lion King Production (costume/stage design, choir, behind the scenes)
- Español
- Coding
- Fine Motor Skills

and so much more! Teachers pitched their activities yesterday to students, who now get to select the P.A.C.E activity they wish to participate in.

## COUNSELLING

School Counsellors are available on Tuesdays and Thursdays for any student who would like to access support. To request a session please let your child's class teacher or [Kelly Clarke](#) know. Everything is kept confidential and private.



## IMPORTANT DATES THIS TERM

Tuesday 1 August, Whanaū Hui for our Māori Community

Thursday 3 August, [Australian Maths Competition](#)

Thursday 3 - Friday 4 August, [Epro8 Internal Event](#)

Monday 7 August, Chinese Students arrive for 2 weeks

Monday 14 - Friday 18 August, Y7 Sports Camp - Totara Springs

Tuesday 15 August, Open Night 6:30 - 8:00 pm

Wednesday 16 August, Vision Screening Tests

Wednesday 16 August, Auckland Museum Trip - Rooms 10 & 11

Thursday 17 August, Epro8 Interschool Competition

Friday 18 August, Playhouse Theatre Performance

Thursday 24 August, Otago Maths Challenge #5

Thursday 24 August, [Mathex Competition](#)

Wednesday 30 August, Out of Zone Enrolments Due

Thursday 7 - Friday 8 September, Advanced Band -

West Auckland Band Festival

Monday 11 - Friday 15 September, Y8 Sports Camp - Totara Springs

Monday 18 September, Lion King Jr - Matinee 12:30 pm

Tuesday 19 - 21 September, Lion King Jr 7:00 - 8:30 pm

Friday 22 September, Last Day of Term Three

Monday 17 July, First Day of Term Three

Monday 17 July, Korean Students arrive for 4 weeks

Tuesday 18 - Friday 21 July, [BLAKE NZ Virtual Reality Visit](#)

Tuesday 18 July, Kiwi Maths Competition

Friday 21 July, Matariki Performance at the Community Centre

Monday 24 - Tuesday 25 July, [World of Maths](#)

Wednesday 26 July, Rutherford College Yr8 Expo

Thursday 27 July, Otago Maths Challenge #4



# IMPORTANT NOTES II

## ART BADGES

Our first-ever Art badges were awarded at the end of last term. The artwork handed in was outstanding! Congratulations Hazel R5 and Maseh R11! Students can earn the 'Outdoor Explorer' Art badge by selecting from a range of activities. If your child is interested in giving an Art badge booklet a go, please ask them to see Whaea Stacey for more information. She looks forward to awarding many more!



## SCIENCE BADGES

A massive congratulations to Louis R5 for being awarded a Gold Science badge for completing 15 Science badges! Louis now appears on the Science Awards Honours Board. Well done to Maseh R11 & Oliver R11 for gaining Bronze Awards for completing 5 Science badges. A special mention also to past pupil Tinirau Hohepa, who was recently awarded a Platinum badge for completing all 30 badges! (27 were completed whilst at Te Atatū Intermediate). If your child is interested in completing a Science Badge please ask them to see Mrs Aratema for more information.



## INSPIRING GROWTH FOR YOUNG PASIFIKA GRADUATION

Last month, ten of our Pasifika students and their whānau attended an event at Rangeview Intermediate to celebrate their completion of H.R.P - Health & Relationships Programme. This programme is facilitated by T.Y.M.S in collaboration with the WAP (West Auckland Forum Community Trust). Over the ten weeks during Term 2, the students learnt from a Pasifika perspective about making healthy choices, growth mindset, and team building. Malō lava to all of our IG graduates!



## BLAKE VR EXPERIENCE

Written by Caprice & Malika R1

The Blake VR experience was very interesting. We learnt about Sir Peter Blake. How he sold his boat to buy a new one and travelled the seas. We also learnt that he was shot by what we would call a pirate while defending his crew on his boat. With the VR headset, we were able to explore different oceans and beaches by looking around in 360 motion. Through it, we could see kina, sharks, schools of fish and heaps of other sea creatures.

They told us that they recorded it by using scuba divers to film it with a 360 camera! We looked at White Island and other maunga and learnt about private marines - where you can't take anything. It was definitely different to public waters as it was much cleaner!

Most interesting, was noticing the huge difference in cleanliness between 2014 -2019. 2014 was way cleaner! The experience was so fun and we would love to do it again!



## WAKA LEADERS

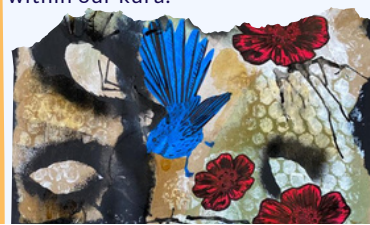
AOTEA | TAINUI | TE ARAWA | TAKITIMU

Back Row: Spencer R7, Nico R14, Miriam R7, Sofia R9

Middle Row: Leon R1, Jackson R3, Anaise R9, Emily R9, Korina R3, Front Row: Hamza R15, Luca R3 & Meola R15.

Missing: Mila R14, Jazzmin R3 & Krystal R3.

Each year, TAI students get the opportunity to run for waka leader. They have to present themselves to their cohort of peers and convince students and teachers of their suitability to lead. Our successful waka leaders have several responsibilities. They need to create, lead and teach their waka a chant. At singing, they need to organise the student body, lead by example, and award students demonstrating our WAKA values, singing and behaving with pride. During lunchtime waka competitions, they need to support our kaunihera with selecting and organising teams and activities - they should also participate in these competitions or encourage those who are competing. Each week at our Monday morning assembly, they take turns at revealing the waka points tally to the school. Finally, during whole school events such as athletics, they will lead their waka with mana and enthusiasm. Being a TAI waka leader is a great opportunity to develop confidence and leadership skills; it is an awesome way to encourage others and promote inclusivity and participation within our kura.



## MATARIKI DAY AT TE ATATŪ COMMUNITY CENTRE

WE ARE ALL REALLY LOOKING FORWARD TO OUR MATARIKI DAY ON FRIDAY. WE HAVE TWO GROUPS OF STUDENTS PERFORMING, PASIFIKA & KAPA HAPA.

THE DAY IS FULL OF PERFORMANCES FROM ALL OF OUR LOCAL SCHOOLS (TE ATATŪ NORTH & SOUTH) FOR THOSE WHO ARE NOT ABLE TO MAKE IT, THE EVENT WILL BE LIVE-STREAMED.

INVITE LINK:

[HTTPS://US06WEB.ZOOM.US/J/82635443773?pwd=QNVNDUJLRHCVBULXNTUOK1JBm3HRDZ09](https://us06web.zoom.us/j/82635443773?pwd=QNVNDUJLRHCVBULXNTUOK1JBm3HRDZ09)

1.30PM - 1.40PM: TAI PASIFIKA

2PM - 2.10PM: TAI & EDMONTON PRIMARY KAPA (INCLUDING CLOSING KARAKIA)

# 2023 SPEECH COMPETITION

On the last Friday of last term, eight finalists selected from across our three syndicates, delivered their speeches to the school. Congratulations to our finalists; Ruby R6, Éire R16, Ishwari R7, Awarua R16, Krystal R3, Indie R11, Lily R14, Ruby R1. The topics related to our Learning Context of Nature in the Balance, with students doing their best to persuade their audience to look after our environment.

Ngā mihi to our guest judges, Blair White from Rutherford College and Margaret Carter from Tirimoana Primary for taking on the difficult job of determining our winners.

Our overall winner for 2023 was awarded to Awarua R16. Second place was Ruby R6.

Third equal went to Ishwari R7 & Krystal R3.

As our top two speech makers, Awarua & Ruby (along with their parents) will be invited to an evening hosted by the Lions Club. The evening includes the opportunity for the students to deliver their speech to an audience of students, their parents, and Lions Club members from our wider community. This is usually followed by a delicious dinner provided by the Lions. Congratulations again to all!



## *Save the Earth, Save Ourselves - Written by Awarua R16*

One planet, one chance, one big problem, and thousands of possibilities. The planet is helping us thrive and survive, but what are we doing, making it suffer? Humanity is at fault and we need to take immediate action as a united group of youth, we all need to open our eyes and realise the destruction we are doing to our planet. It is our arrogant medalling that got us into this mess in the first place so save the earth, save ourselves.

Deforestation is a major problem in society and we aren't doing anything about it. Do you care about yourself as much as I think you do? By killing the trees, the air, and the animals, we are destroying ourselves. We humans are cutting down trees to make room for pastures, farming lands or whatever other selfish excuses we have for deforestation. Copious amounts of land are being deforested every single day! For example: In the Amazon rainforest, 189 hectares are being deforested per hour, that's 3.5 hectares per minute! Could you imagine all of that with additional rainforests all over the world? And if that's not enough for you, just remember: the less trees there are, the less oxygen is being produced. Cut your greed, instead of cutting trees.

Although you may think that animals have plenty of forest land to live in and that everything is all well and good, you're wrong. Just imagine, your whole life, home, and peers being ripped away from you. The troubles they face are astronomical: whether it's food sources, habitat destruction, basic necessities, or disruption to their behaviour. Currently, 137 species of plants, animals, and insects are going extinct per day! If the roles were switched, wouldn't you want someone to help you? A wise man: Martin O'Malley once said: "Reversing Deforestation Is Complicated; Planting a Tree Is Simple."

The solutions and possibilities are endless. It's up to you: save the earth, save ourselves.

Not only are we creating deforestation but we are also a main factor in creating pollution. You hear all about pollution in everyday life whether it's in the news, on posters, or in boring conversations. But when you hear them, do you ever just stop? Just listen? If you're like me and have a family who loves to fish or have people around you that always find a way to bring back seafood for your family, then you probably eat seafood a fair bit. But did you know that with every fish comes plastic? Every time you sit and enjoy your food, that's time after time you consume plastics. It is imperative that we put this to a stop because whilst plastic has revolutionised our way of life it has created various ways for humans to further damage our chances of fixing this problem.

At first glance when you look out into the world you don't see the destruction because you are blinded by what you want to see. We see trees in the park, beaches filled with what looks like clean water, and a world where everyone is being accounted for. What we don't see is the pollution consuming our waters, the masses of trees being cut down, and the effect it has on not only us but the wildlife that live among us. We are contaminating the only singular planet we have and burdening it with our treacherous actions.

So stop ignoring the problem and stand together to save the earth and save ourselves.



# SPORTS



## GYMNASTICS COMPETITION

Written by Samantha R6

On the 23 of June, Kate and I took a group of 11 girls to Waitakere Gymnastics to compete in a school competition.

We had 2 teams competing, one year 7 team and one year 8 team. We all had so much fun and had a great experience being a part of the competition. At the end of the day, Evie placed 8th individually in the year 7 category. I placed 7th and Kate placed 6th individually in the year 8 category. We also had our year 8 team place 3rd overall. We all had a blast and are now moving on to finals sometime this term. Thank you to our wonderful parent support, without you, participating in this competition wouldn't have been possible.



## HOCKEY ZONE DAY

On Wednesday 19th of July, a boy's hockey team went to a zone day at North Harbour Hockey Stadium in Albany. We played three games and got better as the day progressed. It started with a 1-0 loss to Glen Eden Intermediate, a tie 1-1 with Henderson Intermediate and finally a 2-0 win against Rangeview Intermediate. All in all, it was a pretty fun day and most of my teammates will agree with me. - Written by Spencer R7

On Wednesday the 19th of July we took a girl's hockey team to the flash North Shore Hockey Centre to compete in an inter-school hockey tournament with 12 other schools. We played three games in total and got better and better each game. Our first game was played against Glen Eden Intermediate, with the end score being 2-0 to Glen Eden. The second game we played was against Henderson and we tied 0-0. In the third game, we played really good and ended up walking away with a win of 6-0 against Rangeview Intermediate. We had so much fun and learned heaps on this day! A special thanks to the teachers and parent helpers that made it possible. We have improved so much from this opportunity, as well as having a really awesome day! - Written by Evie R5

## NETBALL & BASKETBALL SCORES

### WEEK 10/GAME 6 (TERM TWO)

TAI TOKI vs GEIS 7C 12 - 12  
TAI TOA vs HDNS 7B MURIWAI 2 - 26  
TAI TAHI vs GEIS 7C 8 - 7  
TAI TAWHAKI vs BBI 7D - LBD  
TAI TU vs HDNS BLUEBERRIES 0-3  
TAI RANGIHINA RIVALS vs GEIS 8B 30 - 37  
TAI OPALS vs KIS AROHA 8 - 34  
TAI TACTIX vs ST DOMS YELLOW 20 - 12  
TAI MARVELS vs HDNS RUBY 4 - 13

### FINALS

TAI KNIGHTS 4TH PLACE OVERALL  
TAI KINGS 5TH PLACE OVERALL

### WEEK 1/GAME 7 (TERM THREE)

TAI TOKI vs HDSN 7C NAVY 17 - 3  
TAI TOA vs ST DOMS 7 GREEN 9 - 20  
TAI TAHI vs TAI TU 12 - 3  
TAI TAWHAKI vs HDNS BLUEBERRIES 10 - 6  
TAI RANGIHINA RIVALS vs GEIS 8A 23 - 43  
TAI OPALS vs GEIS 8A 14 - 28  
TAI TACTIX vs BBI 8B 22 - 14  
TAI MARVELS vs BIRDWOOD 6 - 29

### GAME 1 (NEW SEASON)

TAI KNIGHTS vs WWBI GIRLS U15 20 - 40  
TAI KINGS vs GREEN BAY U15 38 - 42



## SPORTS EVENTS IN TERM THREE

WEEK 4: CROSS COUNTRY ZONE DAY, GYMNASIQUES AKL CHAMPS

WEEK 5: YR 7 SPORTS CAMP, RUGBY LEAGUE ZONE DAY

WEEK 9: YR 8 SPORTS CAMP

WEEK 10: VOLLEYBALL ZONE DAY, BASKETBALL ZONE DAY



# COMMUNITY NEWS I

Rutherford College

## Open Day

Big enough to offer choices, small enough to care



Join us...

**OPEN EVENING**

Thursday 27 July 6-8pm

**OPEN DAY**

Friday 28 July 9.30am - 1.30pm

## ENROLMENT WEEK

Monday 31 July to Thursday 3 August - 3.30pm - 7pm  
Saturday 5 August 9.30am - 11.30am

### ACADEMIC CITIZENSHIP

Students are encouraged to strive for personal excellence in all that they attempt. The percentage of students endorsing their NCEA qualifications with Merit/Excellence at Rutherford is well above the national norm for similar schools.

Rutherford College provides and encourages student participation in a wide range of cultural activities. By becoming involved in the cultural life of the school, students gain memorable experiences and develop their interest and abilities.

### CULTURAL

Rutherford College provides and encourages student participation in a wide range of cultural activities. By becoming involved in the cultural life of the school, students gain memorable experiences and develop their interest and abilities.

### SPORT

At Rutherford College, students participate in sporting and recreational activities to learn new skills, improve existing skill levels and enjoy the social fellowship from their chosen sport.

## ENROL ONLINE

[www.rutherford.school.nz](http://www.rutherford.school.nz)



**RUTHERFORD COLLEGE**

Kotuku Street, Te Atatū Peninsula

Ph: 09 834 9790 - Email: [admin@rutherford.school.nz](mailto:admin@rutherford.school.nz)

*Tohea - To Strive for personal excellence*

## TE ATATŪ INTERMEDIATE PRESENTS



19TH - 21ST SEPTEMBER

SCHOOL HALL

Music and Lyrics  
by **Elton John & Tim Rice**

Additional Music and Lyrics by  
**Lebo M, Mark Mancina, Jay Rifkin  
and Hans Zimmer**

Book by **Roger Allers & Irene Mecchi**

Based on the Broadway production directed by  
**Julie Taymor**

Music Adapted & Arranged and Additional Music & Lyrics and  
"Luau Hawaiian Treat" written by **Will Van Dyke**

"It's a Small World" written by **Richard M. Sherman and Robert B. Sherman**

Licensed exclusively by Music Theatre International (Australasia).  
All performance materials supplied by Hal Leonard Australia.



## COMMUNITY NEWS II

# ORTHODONTIC SCHOLARSHIPS



**TWO  
\$10,000  
PRIZES TO BE  
AWARDED**

Scan the QR code to  
submit your nomination



**McIntosh and Fraser Dental are excited** Nominations are open to students in Year 7 to 13 who **to offer two \$10,000 Orthodontic** attend selected schools in West Auckland and West

**Scholarships in 2023.** our websites: [mcintoshdental.co.nz/scholarship](http://mcintoshdental.co.nz/scholarship) and [fraserdental.co.nz/scholarship](http://fraserdental.co.nz/scholarship)

Established in 2012 by Dr Alex McIntosh and Dr Milan [fraserdental.co.nz/scholarship](http://fraserdental.co.nz/scholarship).

Raniga, the scholarship was founded to help

deserving students in West Auckland. Dr McIntosh All nominations must be submitted via our online and Dr Raniga saw a significant need for support and nomination form. For more information and to fill out created this scholarship to give something and submit the nomination form please visit meaningful back to the community. [mcintoshdental.co.nz/scholarship](http://mcintoshdental.co.nz/scholarship) or [fraserdental.co.nz/scholarship](http://fraserdental.co.nz/scholarship). Students can be nominated

Since its creation in 2012, McIntosh and Fraser Dental multiple times, so spread the word to support your have transformed the smiles of 26 students by nominee!

awarding \$175,000 in scholarships. This year the

Orthodontic Scholarships consist of **two prizes of up** Nominations are open from 1st August 2023 and

**to \$10,000 in orthodontic treatment.** on 31st August 2023. Dr McIntosh, Dr Raniga and the scholarship committee will select the finalists in

We are looking for students who have a clear need

for orthodontic treatment and who excel in one of shortly after that. Make sure you follow us on

these key areas: **academics, sport, the arts, cultural** Facebook for regular scholarship updates.

**or community involvement.** Students can be

nominated by teachers, school staff, whanau and their **Good luck!**

peers.

**McIntosh Dental**

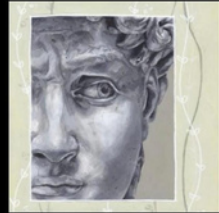


**Fraser Dental**

43 Lincoln Road, Henderson  
(09) 837-2598

1 Wiseley Road, Hobsonville  
(09) 416-5050

## RUTHERFORD COLLEGE THE ARTS EXHIBITION 2023



JOIN US

ARTWORK FOR SALE

SILENT AUCTION

MUSIC, FOOD, WINE

EXHIBITION  
NIGHT

**26**

JULY

6 - 8 30PM

HELD IN OUR SCHOOL HALL

TICKETS ARE \$10 VIA TRYBOOKING OR THE QR CODE BELOW.



ONE TICKET INCLUDES ENTRY, ONE FREE DRINK AND FINGER FOOD THROUGHOUT THE NIGHT.

THERE WILL ALSO BE A LICENSED BAR SELLING WINE, BEER AND JUICES.



**SCRATCHPAD**  
TECHNOLOGY LEARNING CENTRES  
**Henderson**



Ages 5+

Get your child into Technology Learning

**CODING | ROBOTICS | 3D PRINTING**

\*After school sessions

\*School Holiday Programmes

\*Weekend Sessions

\*Coding Clubs for Schools

**4 Waipareira Avenue, Henderson**

[info.henderson@scratchpad.co.nz](mailto:info.henderson@scratchpad.co.nz)

[scratchpad.co.nz](http://scratchpad.co.nz) (09) 815 0825

