

TE ATATŪ INTERMEDIATE

Tū Tāngata

Equipping our students to stand tall: To be the best people they can be and, by becoming life-long learners, reaching their best potential.



MESSAGE FROM MR EVANS - TUMUAKI

Tēnā koutou katoa o Te Atatū Intermediate whānau.

What an amazing run of fine weather we are having - quite the contrast from last year! I hope you are all enjoying these warm, sunny days.

We are now into our 4th week of the term and all students have settled extremely well into the timetable and routines. Our backyard activities at break and lunch times has been a huge hit with the students, with the variety of games and activities that are being played being fantastic to see - from chess and checkers, to the bean bags in the shade for reading, through to sports and games on the courts and fields - there is plenty to get involved in. Speaking of being involved, we have had great turn-out for school related events such as orienteering, softball and TAI TV. It is pleasing to see the involvement, manners and values that we promote being evident around the school.

Our vision of Tu Tangata - standing tall, being the best person we can be and as lifelong learners, achieving at our personal best, is our core driver and our four cornerstone school values support our vision and are based around 'he waka eke noa,' which links to our WAKA values acronym.

These values are;

WHANAUNGATANGA - A core sense of belonging, connection and identity

ATAWHAI - Being kind, considerate and caring of others and yourself

KAITIAKITANGA - Being responsible for ourselves, equipment, the environs (also connects to looking after each other)

AKO - The respectful learning process between students, staff and whānau - supporting to achieve our personal best.



IMPORTANT NOTES

ADMINISTRATION/ OFFICE STAFFROOM AREA - WE HAVE MOVED BACK IN!

Although the Backstreet boys said it first - We are also Back - back into the refurbished office, admin and staffroom area. Thanks to Whaea Tere who performed a blessing for us to move in. A full blessing will take place once the whole building work is completed. On that note, when visiting the school, please note that the old reception area is still closed off whilst we await council consent to complete. Therefore, please follow the signs to the office administration area. We envisage that the reception area will be completed by May and the old access will then resume, unfortunately, when this reception area was added on in the 1990s, it was never signed off and has led to the added wait with compliance issues. Additional funding was required and granted by the MoE to allow this to be completed.

INSTRUMENT APPLICATIONS

Thank you to everyone who made it out lastnight to our "Give It A Go Night" music night! If you have signed your child up to learn an instrument, you will receive a confirmation email by 14 March. If you have not yet signed up you still have time - [please click here](#). Let's get playing!

P.A.C.E.

P.A.C.E has officially started! Please ensure that if you are picking up your child early on a Wednesday afternoon, you know what activity they are participating in. They can be difficult to locate promptly



COLOUR RUN

At the end of this term we will be running a school 'Colour Run' fundraiser. As part of our initial set-up we are now looking for prizes! If anyone in our community has any contacts or may be able to help us out by gifting a prize, we would love to hear from you! Please email kohle.r@teatatu.school.nz.

SUN SMART

With the intense summer sun this year, please ensure your child brings a drink bottle to school every day. The office is seeing many students who are complaining of having a headache, this is often due to not drinking enough water throughout the day. Water is the only accepted drink option for TAI students. Please do not send them to school with fizzy or energy drinks. It is also important for students to bring their hats (named). We have sunscreen available at school, especially during the afternoon sessions, to help keep everyone protected.

MATHS BUDDY

Every student at TAI has access to MathsBuddy as it is a part of our mathematics programme. Students may work at their own pace, allowing them to pause and rewind the lesson, practice questions online and receive immediate feedback. Teachers and parents receive regular reports to monitor students' progress. Please [click here](#) for instructions on parental access.

SCHOOL BADGES

Students at TAI have the opportunity to earn multiple academic badges throughout their time with us.

Art Badge - To achieve the Outdoor Art Explorer Badge, interested students should first collect a task sheet from the art room, which details the specific requirements and activities to be completed. These activities are designed to inspire creativity and connection with the outdoors. After completing the required tasks as outlined on the sheet, participants must submit all their completed work and any required documentation or reflections to Whaea Stacey for evaluation. Successfully meeting the criteria will earn participants the Outdoor Art Explorer Badge, celebrating their exploration and artistic representation of the outdoor world.

Maths Badge - Each term, the students receive a sheet with 400 basic facts questions; 100 per basic operation. The operations are divided into 4 sections. Each section must be completed in a specific time frame. The Year 7s and Year 8s have respective time frames in which to complete the sections. A student must score 100% throughout the four sections in order to receive a MATHS GOLD CLUB badge. Any student that scores in the range 390 to 399 will qualify for Round 2. They'll only answer the ones that were incorrect, and hopefully score 100% this time round to secure a badge.

Writers Badge - Students can earn their Writer's Badge through gaining a level 9 in the PAT punctuation and grammar test which is sat at the beginning of the year, and then again at the end of the year. They can also obtain a badge if they receive a level 5 assessment in their major term 1 piece of writing.

Reading Badge - Students can earn a Reading badge by hitting different targets throughout the terms. Targets can be found [here](#).

Science Badge - All students are able to extend themselves in their fields of interest by working on Science Badges. This is something students can continue into highschool, if they wish to try for every badge! Ask your child for more information or check out the [website](#).

SCHOODOCS

Tai subscribes to SchoolDocs for all policies and procedure. These are available to the community. Please visit the [website](http://www.schooldocs.co.nz); www.schooldocs.co.nz - Select Te Atatu Intermediate. Enter the username: teatatu and the password: harbourview. Follow the links to the relevant policies which are available for review.



Congratulations to Liam R14 & Arnav R9 for starting the year strong with the first two Science badges for 2024! Liam in Electronics & Arnav in Astronomy!

SPORTS/HAKINAKINA

It would be an understatement to say our Hakinakina (Sports) whānau at T.A.I have been busy! Ki-o-rahi, softball and orienteering has started. Planning for Flag football, basketball, netball, tag, swimming and wahine cricket has begun with many zones happening this term!

As we strive to create a space for students to feel comfortable in trying out new sports we had 106 put their names forward to try out for softball, 130 for ki-o-rahi and 140 for TAG - oh what a great problem to have!! A great segway into, many, many thanks to the parents who have stepped into our T.A.I whanau hakinakina space to offer help. Please complete [this form](#) if you would like to add your name to our whānau list.

Students have also been able to enjoy their own "TAI backyard", with lots of extra games and activities to keep them active or chill during their break times.

As always, if you have any questions please email Matua Tony

NETBALL TRIALS

We have had a massive 135 students say they are keen to participate in our TAI Netball Season at Netball Waitākere/Te Pai Courts which begins shortly after the Easter weekend, with registrations closing at the beginning of March.

If your child is one of them, a google form will be sent home to whānau with more information about the season including fees.

Trials for our Year 8's will be held next Wednesday 28th February at 3:15 - 4:15 pm for those wishing to play comp. For those who wish to play non-comp it will be held on Thursday 29th February 3:30 - 4:30 pm.

Yr7's will be the following Wednesday 6th March (comp) & Thursday 7th March (non comp), same times apply.

As trials begin soon after school finishes, we kindly ask that parents wait for the trials to be finished before coming on-site to collect their child.



DODGEBALL

Last weekend a few of our staff and students participated in the Summer Rush Dodgeball Tournament at the Te Atatū Peninsula Community Centre. It was a fun day of play and all of our teams placed really well. Alfie R6 (and former TAI student Charlie Dunford) finished first overall in the children's division, well done! Evie R5 and Sharlott R6 finished third in the children's division as did Matua Tony and Michael in the men's division. Well done everyone!

Michael is also running a Junior Dodgeball class, every Sunday through March at the community hub.



BASKETBALL

TAI would like to participate in two different after-school basketball comps this year, with a total of four teams. Competition starts in Term 2. If your child is interested in trialing for a basketball team, [please click here](#). Please note that as this is an after-school competition, it does incur a fee. Exact dates, times & fees are TBC.

IMPORTANT SPORT DATES TERM ONE

WEEK 5
YEAR 8 - NETBALL TRIALS

WEEK 7
SWIMMING ZONE DAY
YEAR 8 - BASKETBALL TRIALS

WEEK 9
TENNIS ZONE DAY

WEEK 6
YEAR 7 - NETBALL TRIALS
GIRLS SOFTBALL ZONE DAY
BOYS SOFTBALL ZONE DAY
FLAG FOOTBALL TRIALS

WEEK 8
TAG ZONE DAY
ORIENTEERING ZONE DAY
YEAR 7 - BASKETBALL TRIALS

WEEK 10
KI O RAHI
GIRLS CRICKET ZONE DAY

(HOLIDAYS)
FLAG FOOTBALL COMPETITION



SPEC & TECH - TERM ONE

ART

"Flight of the Feather"

Students will be learning about New Zealand's native birds and their profound significance within Māori culture; understanding the deep connections and cultural narratives that these birds embody in Māori traditions and lore. Students were invited to draw inspiration from their own cultural backgrounds, leading to the creation of uniquely designed feathers. These personalised feathers, each telling a story of heritage, identity, and belonging, are being woven together to form a class korowai. Later on in the term students will learn painting and printmaking techniques to create a Tūi bird painting and native bird print.



SCIENCE

This term in Science / Pūtaiao we will be looking at Planet Earth & Beyond. This will include investigations and experiments in the fields of Astronomy, Geology and Meteorology (the study of weather).

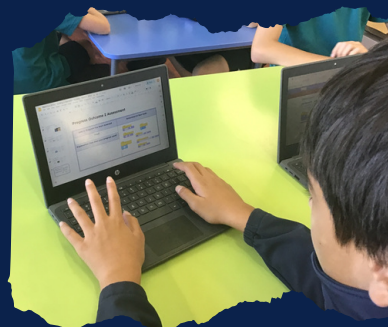
All students are also able to extend themselves in their fields of interest by working on Science Badges. Ask your children for more information or check out the [website](#).

During GATE we will continue to work on STEAM challenges.

CODING AND ROBOTICS

In Coding & Robotics we are starting the term off by learning how to program using Scratch. We are beginning with the basics and students are on a self-paced program to build up from sequencing all the way up to using iterations, selection, operators and variables. After we are finished with Scratch, we will look at coding the Sphero robots as well as using Micro:Bits and circuits.

For Whakapakari Waehera/Karetao (Coding & Robotics Extension) we will be looking at a few different robots and potentially some more complex computer languages to help extend those students interested in those topics.



HARD MATERIALS

This term students will be making a metal desk tidy project to hold stationery.

For GATE students will be doing a woodworking project. Both Year 7 & 8 start by doing a cardboard mockup for planning, followed by a plywood prototype.

Year 7's will be creating a toy vehicle that will include electronic components like lights. While Year 8's will be creating an aeroplane which features lights and a propeller

A cardboard mockup for planning and then a plywood prototype

COMMUNITY NEWS

Fun & Educational
CODING LESSONS

Learn to code with expert tutors.

Gain the ability to create with technology (instead of just consuming it).

All skill levels welcome.

Grab a free trial lesson at codingnz.com

CODINGNZ

Ages
9 to 11
12 & 13
14 to 16

DRAMA - DANCE - SINGING

Accelerate Confidence and Communication Skills

Enrol in February to be in the draw to win one of ten April Holiday programs with a bestie.

"Pform.nz classes provide the most fun of our son's week"

There is a Pform venue near you in Te Atatu every Tuesday at the Community Centre & Library and advanced training at Wellesley Studios every Saturday.

ADVANCED PERFORMANCE TRAINING

These courses are designed for those students who want to take their education in the Performing Arts further. If you want to audition with success then these are the courses for you. You will train in a fun and challenging environment with performers who are like-minded. No previous experience is necessary but would be an advantage.

Performers will have the opportunity to tour and have numerous big-stage performances. You will train at the Wellesley Street Studios each Saturday. Free Trials available for a limited time www.pform.nz/free-trial

www.pform.nz info@pform.nz

Qizzle™

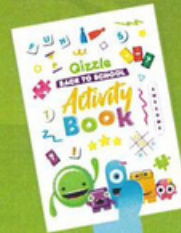
SCHOOL PACKS

Forward
**BACK TO
SCHOOL**

**SIMPLE,
STRESS FREE
STATIONERY
SHOPPING!**

**PLUS FREE
ACTIVITY
BOOK!**

1. Visit schoolpacks.co.nz
2. Select your child's school, year/pack and review list
3. One click to add to cart and checkout
4. Sit back, relax and your child's stationery will be delivered to your door.



www.schoolpacks.co.nz

**DELIVERY
TO YOUR
DOOR**

**BUY NOW
PAY
LATER**

**YOUR
ORDER WILL
REWARD
YOUR SCHOOL**

**110%
NZ
OWNED**

THE SMART CHOICE

THE UNIFORM SHOPPE

WHY THE UNIFORM SHOPPE?



FRIENDLY, PERSONAL FITTING SERVICE BASED ON OVER 50 YEARS' EXPERIENCE



FOR ONE-STOP SHOPPING UNIFORMS, SHOES, SCHOOL BAGS AND MORE!

LAYBY AND WINZ QUOTES AVAILABLE



EFTPOS AND CREDIT CARDS ACCEPTED

THE UNIFORM SHOPPE

THE SMART CHOICE



Avondale Shop,
521, Rosebank Road,
Avondale
Auckland 0627

022 3931775

avondaleshop@sas.co.nz



AVONDALE SHOP

WWW.THEUNIFORMSHOPPE.CO.NZ

PRICE FLYER



Te Atatū
INTERMEDIATE
SCHOOL

THE UNIFORM SHOPPE
THE SMART CHOICE
AVONDALE STORE

THE SMART CHOICE



POLO

8-3XL \$45.00



PE TEE

8-16 \$34.50
S-3XL \$39.00



KIDS JACKET
ADULTS JACKET

8-14 \$85.00
S-3XL \$90.00



P/F TOP

8-16 \$62.50
L-2XL \$65.00



SKIRT

FROM \$68.00



SHORT

77cm & 87cm \$65.00



PE SHORT

8-10 \$25.00
M-2XL \$30.00



TROUSER

FROM \$65.00



SOCKS

FROM \$14.50



BUCKET HAT

\$19.95



CAP

S-L \$16.99

OPEN
DAYS 6

Monday - Friday
08.30AM
04.30PM

SAT
09.00AM
02.00PM

SCHOOL UNIFORM CLUB

MAKE BACK TO SCHOOL STRESS-FREE WITH OUR SCHOOL UNIFORM CLUB.

LAYBY

TAKE ADVANTAGE OF OUR LAYBY SERVICE TO SECURE YOUR UNIFORMS AND PAY INTEREST-FREE INSTALLMENTS WITH ONLY A 20% DEPOSIT.

CLICK AND COLLECT

PLACE YOUR ORDERS ON OUR REVAMPED WEBSITE TO AVOID THE LONG QUEUES AND PICK UP YOUR UNIFORM FROM YOUR NEAREST STORE.



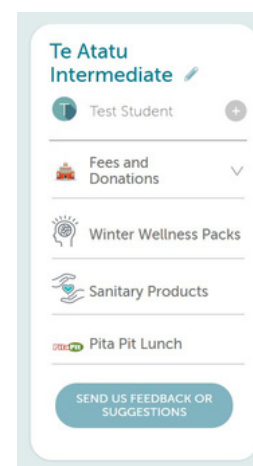
ONLINE PAYMENTS WITH KINDO!

All your school payments can be made in one place.... with your myKindo account.

Your personalised account (Fees and Donations icon) will show you all your outstanding payments, where you can choose to make a part payment, or pay the item in full.

You will also be able to purchase optional items, buy lunches, support fundraisers, and purchase event tickets.

This is our preferred method of payment, and we encourage all our families to sign up!



New users

New users can set up a myKindo account easily!

[Click here](#) to register & create an account. All you need is the email address the school has on file for you.

Existing users Already have an ezlunch or myKindo account?

If you have an account (with another school or organisation), you can [log in here](#), and use the my details page to update your details. One myKindo account for all your students, at their different schools.

Payment

There are several ways you can choose to top-up your account, and this can be done at the checkout, or by selecting the 'top up account' option at any time.

	top up account	my details	my orders	mykindo
POLi	No fees. Instant transfer. **RECOMMENDED**			
Credit/Debit Card	50 cent charge + 2.5% fee. Instant transfer.			
	Visa / MasterCard / American Express and China UnionPay available.			
Bank Transfer	No fees. Allow 2 days for processing.			

Shopping

There are TWO types of transactions you will be able to make using myKindo: paying personalised payment requests for your students and purchasing optional items.

screen under your student's name.

available).

Personalised payment requests will appear at the top of your

Pay the full amount by clicking '+' next to the item or make a part payment, by changing the amount before clicking the '+' (if

There will also be the Kindo shop/optional items.

Click on your student's initial next to an optional item to add to your cart.



\$0.00

Once you have made all your purchases click on the *Checkout* option to complete your transaction.

If you have sufficient funds, then simply click *Place Order* at the checkout and you're done!

If you have insufficient funds, you will be able to top-up before completing your purchase.

Your order will automatically go through to the school or lunch supplier, and you will receive an email receipt confirming your top-up and/or purchase!

mykindo App

mykindo app is also available to download for both android and iPhone.

Need assistance? Our Kindo helpdesk is open 8am to 4pm weekdays.

Freephone: 0508 4 KINDO (0508 454 636) Email: hello@mykindo.co.nz
Online support: support.mykindo.co.nz